

# GALLERY

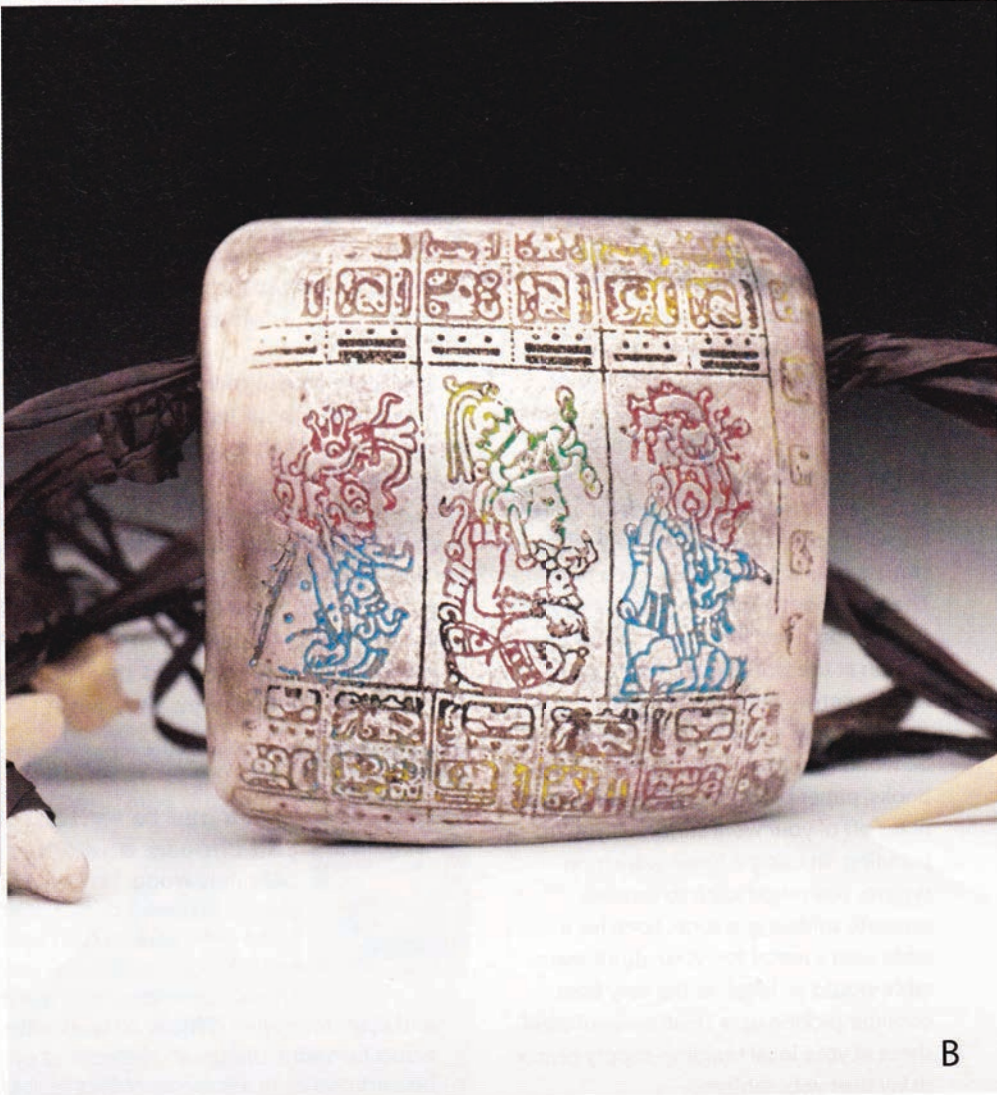
[A] When a dear friend of **Nisa Smiley** was getting married, the bride-to-be requested Smiley to make bridal jewelry based on the Japanese Lantern plant. Smiley created *Physalis Earrings* from fine silver metal clay, Argentium sterling silver, and glass. Photo by Robert Diamante.

[B] **Julia Rai** finds the Mayan culture fascinating. Using the Dresden Codex, an ancient Mayan astronomical text, she created *Mayan Bead*. The bead is made of fine silver metal clay and the texture is emphasized with Prismacolor pencils. The necklace is completed with raffia, bones, and shark teeth. Photo by Paul Mounsey.

[C] After enjoying a McMenamins Rubenator (that's half Ruby ale and half Terminator stout), **Denise Harrison** used her camera phone to snap a photo of the frothy lacing left inside her pint glass. She converted the image to an etching, and then used the etching to texture wax. *Beer Speak* is cast in sterling silver.  $1\frac{5}{16} \times \frac{3}{8} \times \frac{7}{8}$  in. (24 x 9.5 x 22 mm). Photo of ring by Joseph Eastburn. Photo of pint glass by the artist.



A



B